

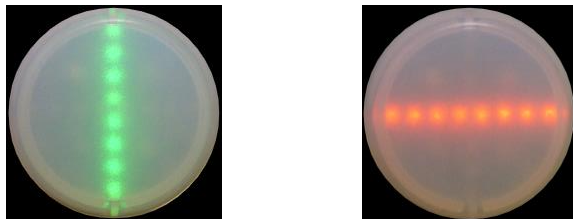
Electrical Switch Indicator

Type LSI

Electrical switch indicator with built-in LED with long life. Compact design with connection terminals on the back.

- Very long operating time
- Easy mounting
- Wide angle
- Reliable reading at long distance
- **Space and install savings, combine two lamps in one**

Indicator states:



(Available in other colors upon request)

Description

The indicator consists of two rows of lights, one showing vertical and the other showing horizontal direction.

Green vertical row of LEDs shows switch etc. in: **On-position**

Red horizontal row of LEDs shows switch etc. in: **Off-position**

Other information

Recess for the indicator and the locking cam are shown in the figure below. The indicator is delivered in a standard round design. Loose square front included for circuit breaker. Other colors and combinations of light strips can be supplied on request. The green or red light indicates switch positions in a way that makes it possible to read switch positions at a distance of 20 meters and at an angle of $\pm 45^\circ$

Indicator Lamp LED
IP67 (front)



Indicator lamp with built-in LED

Typical applications

- Switchboards
- Control cabinets

Electrical specifications

- The indicator works with both AC or DC voltage
- Available supply: 24V..110V..230V ac / dc
- Custom supply voltages upon request
- < 10mA in the specified voltage range

Mechanical specifications

- Working temperatures: -40 to +70°C
- Pluggable base with 3 screw connections
- Custom LED colors upon request
- Enclosure: IP67 (front)

Order Codes:

LSI-110-G-R-SQ



Code	[Voltage]
24	24 V ac/dc
110	110 V ac/dc
230	230 V ac/dc

Code	[Vertical color]
G	Green
C1	Custom

Code	[Accessories]
SQ	Square frame
SH	Sign holder
N	None

Code	[Horizontal color]
R	Red
C2	Custom

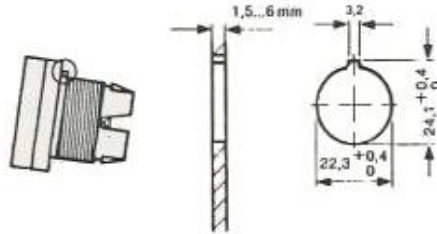
Accessories

	Description	Order Code
	Square (31x31 mm)	SQ
	Sign holder	SH

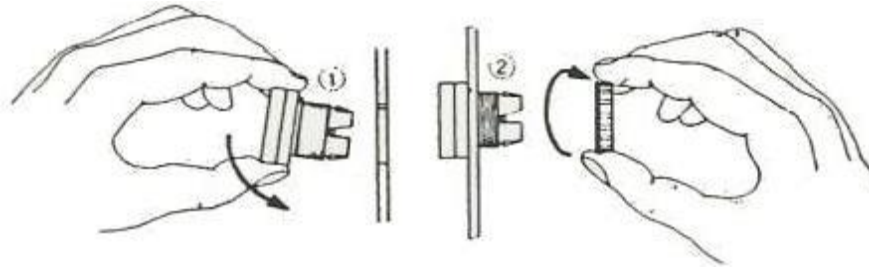
Pictures



Dimensions

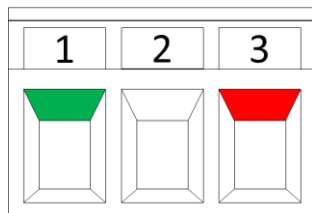


Assembly



Circuit Diagram

Pluggable connection



Green

Common

Red

Voltage	Terminal	Light
ac / dc	1	Vertical
ac / dc	2	
ac / dc	3	Horizontal